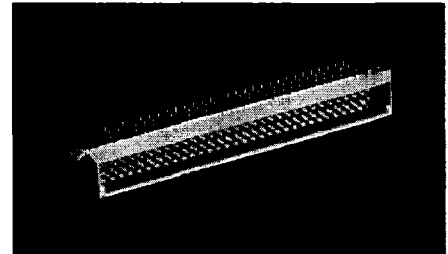
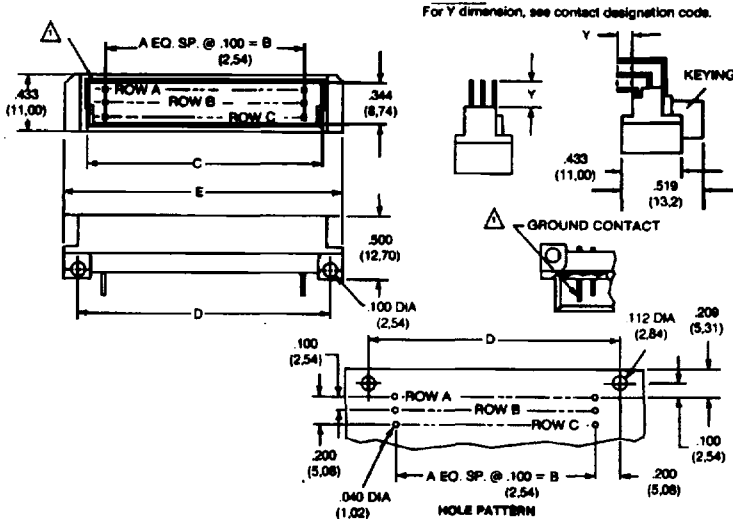


Expanded Style C, 1/2 C & 1/3 C Header

8457

Standard

3-Row/4-Row/5-Row



ORDERING CODE Typical Example **10 8457 096 002 025**

PREFIX

10-PIN WITHOUT KEYING 16-PIN WITH BOARD RETENTION CLIP FOR .062" (1.6mm) BOARD WITHOUT KEYING
 12-PIN WITH KEYING 17-PIN WITH BOARD RETENTION CLIP FOR .062" (1.6mm) BOARD WITH KEYING

SERIES

NUMBER OF CONTACT CAVITY POSITIONS

Standard DIN, Style C, 1/2 C, & 1/3 C

NO. CONTACT POSITIONS	CONTACT ROWS	A	B	C	D	E
030	3 (3 x 10)	9	.900 (22.86)	1.158 (29.41)	1.300 (33.02)	1.497 (38.02)
048	3 (3 x 16)	15	1.500 (38.10)	1.760 (44.70)	1.900 (48.26)	2.122 (53.90)
066	3 (3 x 32)	31	3.100 (78.74)	3.358 (85.29)	3.500 (88.90)	3.697 (93.90)

# POS.	CTC ROWS	A	B	C	D	E
128	4 (4 x 32)	31	3.100 (78.74)	3.358 (85.29)	3.500 (88.90)	3.697 (93.90)
160	5 (5 x 32)	31	3.100 (78.74)	3.358 (85.29)	3.500 (88.90)	3.697 (93.90)

CONTACT DESIGNATION CODE

CODE NO.	DESCRIPTION	TERMINAL LENGTH = Y
001	sq. terminal P.C. contact	.134 (3.40)
002	P.C. contact, right-angled, short sq. terminal	.118 (3.00)
102		
003	Straight wire wrapping sq. terminal	.512 (13.00)

CODE NO.	DESCRIPTION	TERMINAL LENGTH = Y
004	P.C. contact right-angled long for 2 wire wrap levels sq. terminal	.445 (11.30)
006	Solder Hole	Row A & C = .303 (7.70) Row B = .409 (10.4)
007	Solder Loop	Row A & C = .252 (6.40) Row B = .358 (9.10)
008	P.C. contact right-angled, short sq. terminal	.090 (2.3)

VARIATION CODE

Class	Gold All Over		Gold Contact Area, Tin/Lead Terminal	
	DIN 41612 Class II	DIN 41612 Class III	DIN 41612 Class II	DIN 41612 Class III
Cycle Life	400 Cycles	50 Cycles	400 Cycles	50 Cycles
Variation Code Numbers				Contact Loading Positions
067	073	025	001	Fully loaded .100 (2.54) grid
068	074	026	002	Row A & C Fully loaded .100 (2.54) x .200 (5.08) grid

NOTE: For alternate loading and plating, please contact factory.

△ Ground contact row a, first & last position.

△ Not available with keying. Shaded variations recommended for standard applications. Available through ELCO franchised distributors.